




ALIGNMED 

POSTURAL FITNESS™ FOR LIFE



FOUNDED BY BILL SCHULTZ, AlignMed is Evidence Based Apparel® and a lifestyle technology designed, researched and developed with an esteemed group of physicians and sports scientists. The science and technology encompass exoskeletal garments with an anatomic matrix of bands, panels and seams, collectively referred to as NeuroBands®.

AlignMed's NeuroBands and Evidence Based Apparel is wearable therapy. Engineered to correct posture and improve natural alignment by retraining muscles this action improves muscle tone, performance, posture, poise and reduces pain. The therapeutic touch and tensions of NeuroBands target specific muscle groups, in a kinetic sequence to influence the central nervous system (brain and spinal cord) and its essential role in movement, injury prevention, and injury recovery.

NeuroBand Technology can be used to retrain poor postures due to habitual movement behaviors brought about by prolonged sitting, texting, computer use or athletic injury.

ALIGNED

POSTURE SHIRTS®

MEN: PULLOVER AND ZIPPER — BLACK, WHITE, AND WHITE/GREY

WOMEN: PULLOVER AND ZIPPER — BLACK, WHITE, BLUE, AND WHITE/GREY

The choice for enhanced performance, increased range of motion, injury prevention, pain reduction, and faster recovery.

Anatomically constructed with tension panel NeuroBands® that activate and stimulate specific muscle groups and joints to keep you in perfect form. Controlled resistance causes your muscles to contract to increase strength and keep you performing at your best.

For those suffering from an injury or surgery, we recommend the zipper version of this shirt.

FEATURES

- VENTED POWERMESH™ PANELS
- MOISTURE WICKING
- ANTI-MICROBIAL PROTECTION
- DESIGNED WITH OUR PATENTED NEUROBAND® TECHNOLOGY

BENEFITS

- INCREASES UPPER BODY STRENGTH
- INCREASES OXYGEN INTAKE
- IMPROVES SHOULDER MECHANICS
- IMPROVES CORE ACTIVATION
- DECREASES WEAR AND TEAR ON JOINTS

CONTENT & CARE

- 83% POLYESTER, 17% SPANDEX
- WASH COLD
- AIR DRY
- NO IRON



- MUSCLE ACTIVATION
- DYNAMIC SUPPORT
- POSTURAL CONTROL
- IMPROVE BALANCE
- INCREASE RANGE OF MOTION
- IMPROVED FLEXIBILITY
- INC. RECOVERY RATE
- ENHANCED PROPRIOCEPTION



MEN'S PULLOVER (FRONT) › BLACK



MEN'S PULLOVER (FRONT) › WHITE



MEN'S PULLOVER (BACK) › WHITE



MEN'S PULLOVER (BACK) › BLACK



MEN'S PULLOVER (FRONT) › WHITE/GREY



MEN'S PULLOVER (BACK) › WHITE/GREY



MEN'S ZIPPER (FRONT) › BLACK



MEN'S ZIPPER (BACK) › BLACK



MEN'S ZIPPER (FRONT) › WHITE



MEN'S ZIPPER (BACK) › WHITE



WOMEN'S PULLOVER (FRONT) › BLUE



WOMEN'S PULLOVER (BACK) › BLUE



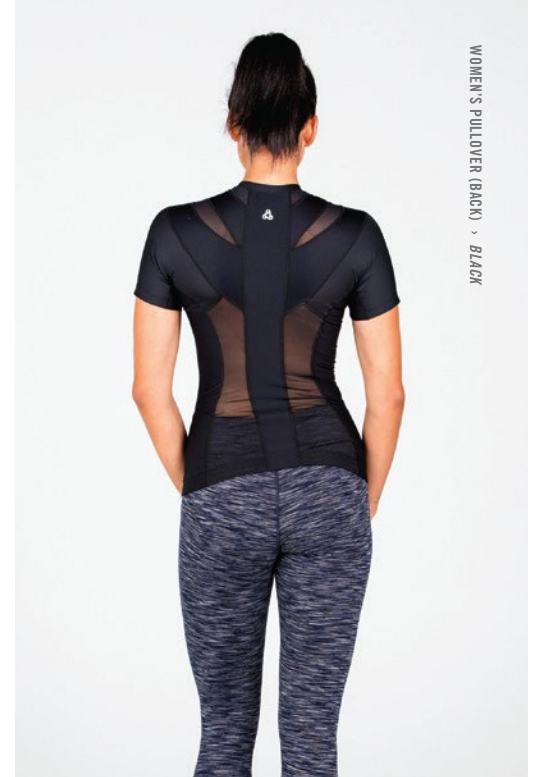
WOMEN'S PULLOVER (BACK) › WHITE/ GREY



WOMEN'S PULLOVER (FRONT) › WHITE/ GREY



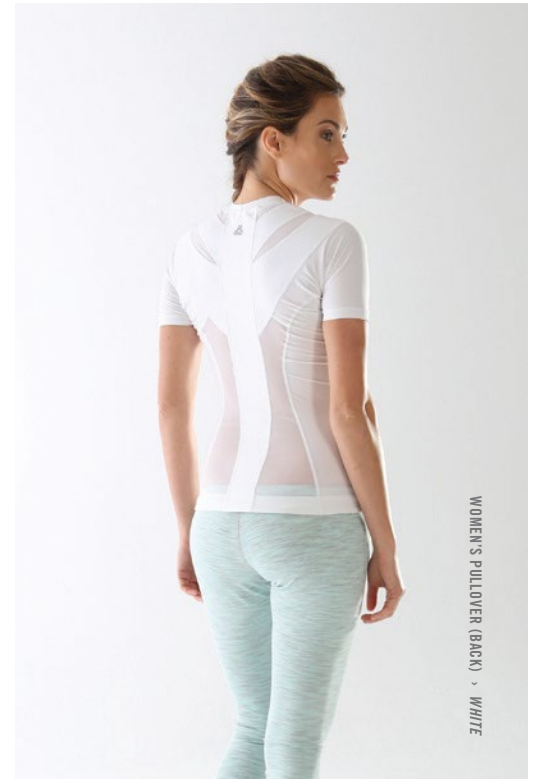
WOMEN'S PULLOVER (FRONT) › BLACK



WOMEN'S PULLOVER (BACK) › BLACK



WOMEN'S PULLOVER (FRONT) › WHITE



WOMEN'S PULLOVER (BACK) › WHITE



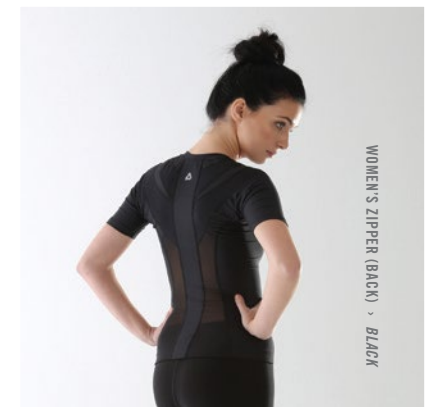
WOMEN'S ZIPPER (FRONT) › WHITE



WOMEN'S ZIPPER (BACK) › WHITE



WOMEN'S ZIPPER (FRONT) › BLACK



WOMEN'S ZIPPER (BACK) › BLACK

ALIGNEDMED

SPINAL

®



ALIGNMED

SPINAL

®



Designed to improve posture, reduce pain, and increase range of motion in the shoulder and spine.

Built-in shoulder and lumbar NeuroBands® straps allow for various degrees of tension for maximum comfort and stability. This pre-habilitation, rehabilitation, retraining device optimizes core activation, lumbar stability, scapular function, and increases rotator cuff strength.

DYNAMIC RECOVERY FROM SPINE
AND SHOULDER INJURY

TREATMENT FOR CHRONIC PAIN

PRESCRIPTION STRENGTH POSTURE
MANAGEMENT

MEDICARE APPROVED
REIMBURSEMENT CODE L0457

FDA REGISTERED

CONTROLLED RESISTANCE BETWEEN
TARGETED MUSCLE GROUPS
FOR MUSCLE BALANCE AND JOINT
ALIGNMENT

COMMON CLINICAL USES (SPINAL Q®):

SPINE: Kyphosis, Compression Fracture, Degenerative Disk Disease, Thoracic and Lumbar Pain, Forward Neck and Head, Spinal Stenosis, Scoliosis, Sciatica.

PAIN MANAGEMENT: Thoracic Outlet Syndrome, Text Neck Upper Trap and Neck Pain, Chronic Back Pain, Long Thoracic Nerve Palsy, Myofascia Pain, Repetitive Strain Injury, Chronic Headaches. **SHOULDER:** Scapulo-Thoracic Dyskinesis, Rotator Cuff, Slap Tear, Impingement, Clavicle Fracture, Anterior/Posterior Instability, Loose Capsule, Rounded Shoulders.

FEATURES

- MOISTURE WICKING
- ANTI-MICROBIAL PROTECTION
- FRONT SEMI-LOCK ZIPPER
- EXTERNAL NEUROBAND®

CONTENT & CARE

- 83% POLYESTER, 17% SPANDEX
- WASH COLD
- AIR DRY

BENEFITS

- PAIN MANAGEMENT FOR SHOULDERS AND SPINE
- IMPROVES ALIGNMENT
- IMPROVES CORE ACTIVATION
- IMPROVES SHOULDER MECHANICS
- IMPROVES BLOOD FLOW TO UPPER EXTREMITIES
- INCREASES UPPER BODY STRENGTH
- INCREASES OXYGEN INTAKE
- ACCELERATES HEALING
- DECREASES WEAR AND TEAR ON JOINTS

MEN'S SPINAL Q® (FRONT)



MEN'S SPINAL Q® (BACK)



WOMEN'S SPINAL Q® (FRONT)



WOMEN'S SPINAL Q® (BACK)



ALIGNED

CAPRI PANTS

for WOMEN

AVAILABLE IN: BLUE, MINT, BLACK, AND NAVY

Our Capri (mid-calf) pants are the perfect hybrid of performance and function. Our internal technology shapes and fires your muscles while energizing and supporting your hips and legs. Perfect for any activity or daily wear.

FEATURES

- DESIGNED WITH OUR POWERMESH™ PANELS
- MOISTURE WICK MATERIAL
- HIDDEN WAISTBAND POCKET FOR ESSENTIALS
- MID-RISE WAISTBAND FOR CONTROL
- DIAMOND GUSSET FOR ULTIMATE COMFORT
- FLATLOCK SEAMS REDUCE CHAFFING

BENEFITS

- STIMULATES GLUTES AND HAMSTRINGS
- INCREASES LOWER BODY AWARENESS
- LIFTS AND SHAPES GLUTES
- EMPLOYS RESISTANCE TRAINING

CONTENT & CARE

- 85% POLYESTER, 15% SPANDEX
- HAND WASH COLD
- AIR DRY
- NO IRON





CAPRI PANTS (FRONT) › BLACK



CAPRI PANTS (BACK) › BLACK



CAPRI PANTS (FRONT) › MINT



CAPRI PANTS (BACK) › MINT



CAPRI PANTS (FRONT) › BLUE



CAPRI PANTS (BACK) › BLUE



CAPRI PANTS (FRONT) › NAVY



CAPRI PANTS (BACK) › NAVY

ALIGNEDMED

SPORTS BRA *for* WOMEN

AVAILABLE IN: BLUE, WHITE, BLACK, AND NUDE

Engineered with our NeuroBands® technology, our sports bra interacts with your body to support the alignment of the chest, neck, scapula, and spine. The sports bra provides the perfect amount of tension and preventative care for everyday use.

FEATURES

- VENTED POWERMESH™ PANELS
- MOISTURE WICKING
- ANTI-MICROBIAL PROTECTION
- DESIGNED WITH OUR PATENTED NEUROBAND® TECHNOLOGY

BENEFITS

- INCREASES UPPER BODY STRENGTH
- INCREASES OXYGEN INTAKE
- IMPROVES SUPPORT DURING EXERCISE
- IMPROVES SHOULDER MECHANICS
- DECREASES WEAR AND TEAR

CONTENT & CARE

- FRONT: 89% NYLON, 10% SPANDEX, 1% OLEFIN
- BACK: 87% POLYESTER, 13% SPANDEX
- WASH COLD
- AIR DRY



THE ALIGNME BRA USES RESISTANCE
TO INTERACT WITH YOUR BODY TO:

SUPPORT ALIGNMENT OF THE
CHEST, NECK, SCAPULA AND SPINE

ACTIVATE MUSCLES WITH BUILT
IN CONTROLLED TENSIONS

PROVIDE IMPORTANT BIOFEEDBACK
FOR MUSCLE RETRAINING

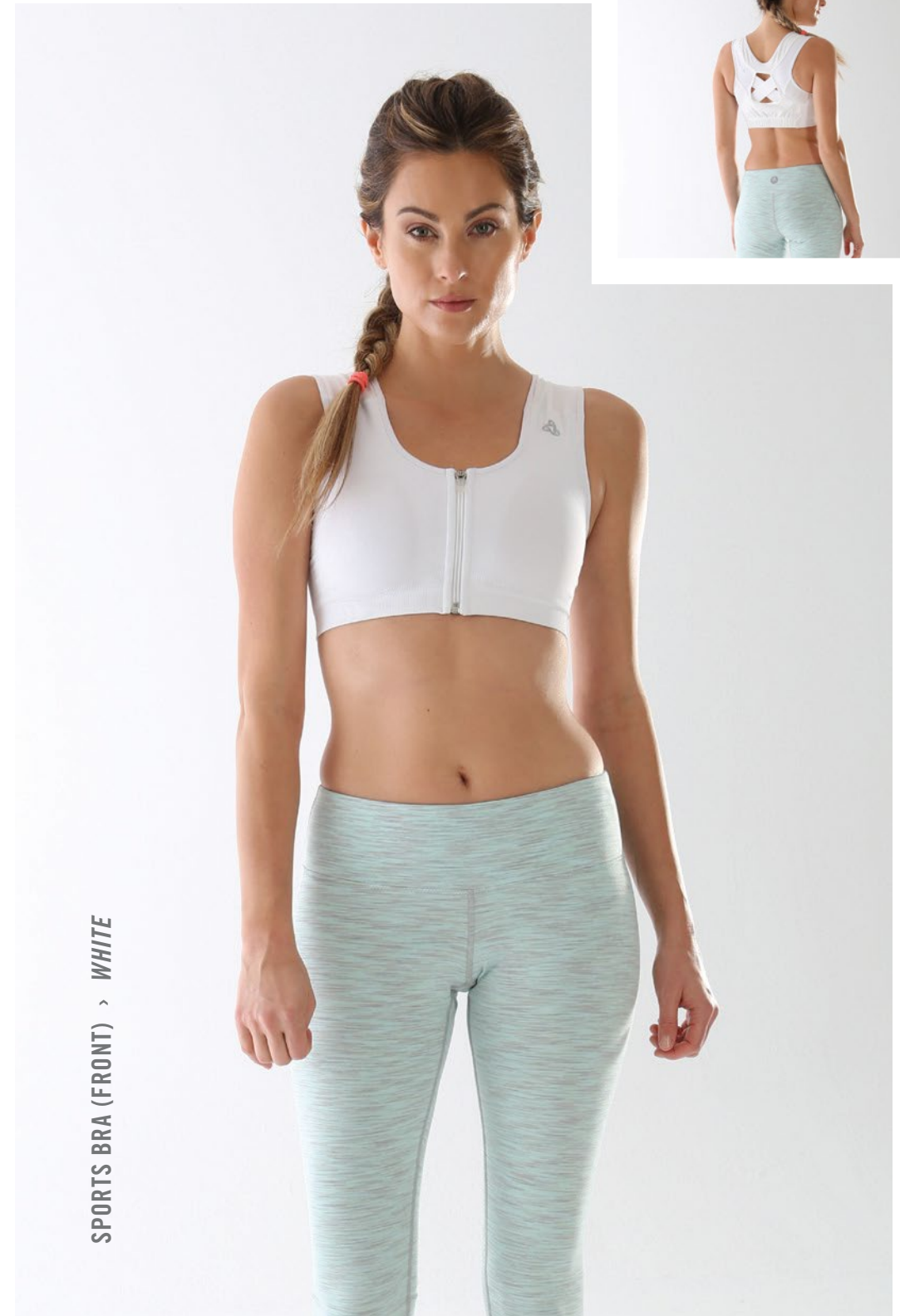
IMPROVE POSTURAL FITNESS



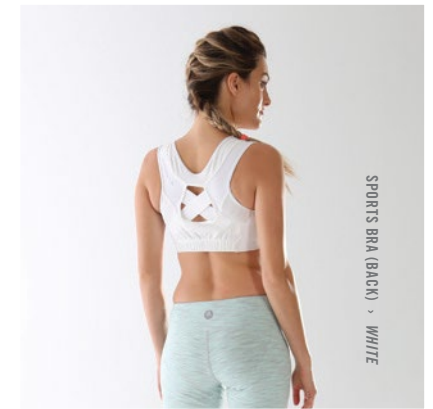
SPORTS BRA (FRONT) › BLACK



SPORTS BRA (BACK) › BLACK



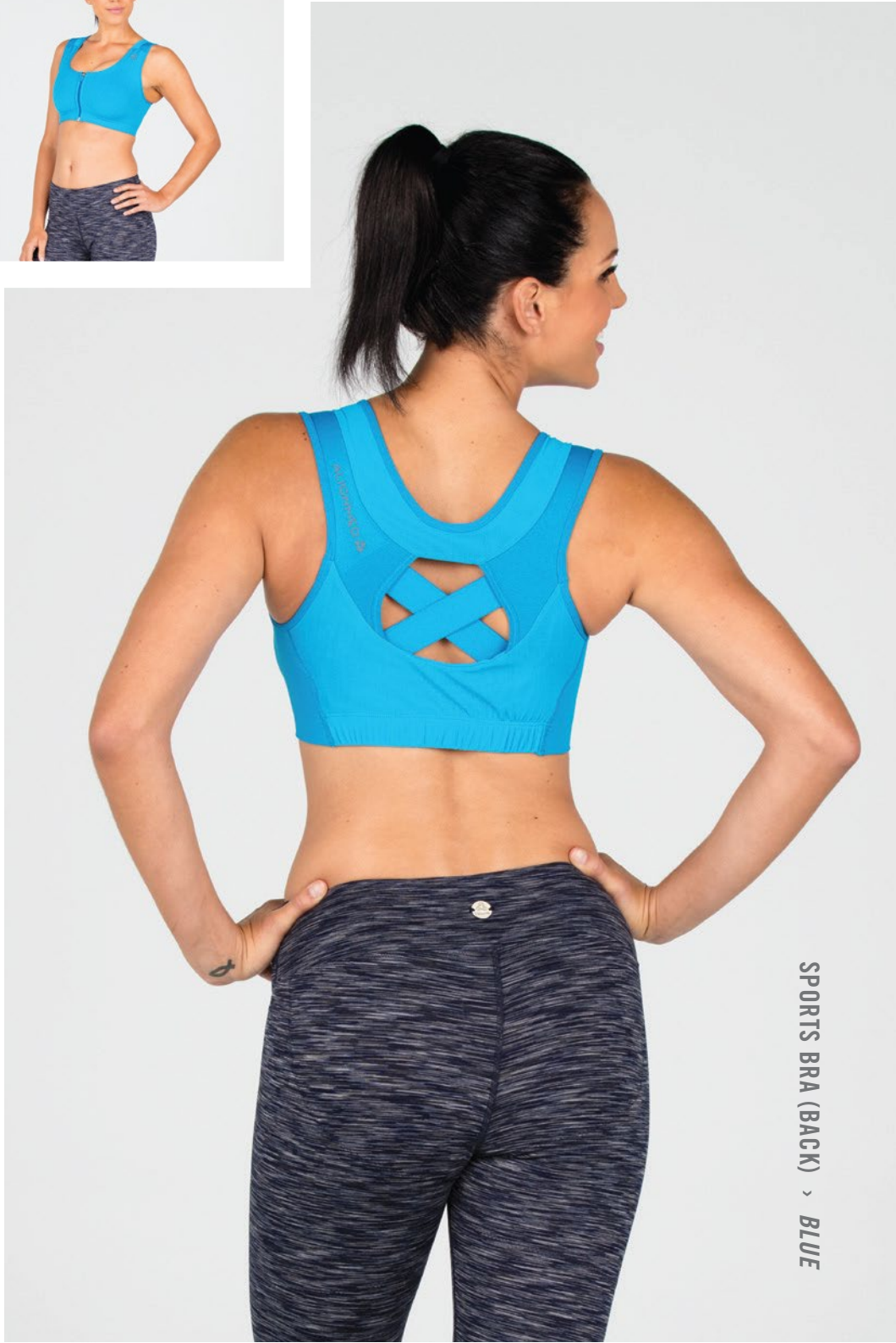
SPORTS BRA (FRONT) › WHITE



SPORTS BRA (BACK) › WHITE



SPORTS BRA (FRONT) › BLUE



SPORTS BRA (BACK) › BLUE



SPORTS BRA (FRONT) › NUDE



SPORTS BRA (BACK) › NUDE

ALIGNEDMED

FULL RANGE INSOLES™ UNISEX

An innovative solution that will
revitalize your feet with every step
you take.

The structure of our Full-Range Insoles™ is engineered to promote
circulation to the feet and toes by immediately absorbing impact and

instantly redirecting that energy, getting
you support and leverage when you
need them most to maximize endurance,
agility, and comfort.

FEATURES

- DURABLE AND SOFT FABRIC WICKS AWAY MOISTURE NATURALLY
- INTERCHANGEABLE AND REVERSIBLE IN ALL FOOTWEAR
- DESIGNED WITH OUR PATENTED GEL-CHANNELING™ TECHNOLOGY

BENEFITS

- INCREASES FOOT STRENGTH
- IMPROVES DYNAMIC BALANCE
- IMPROVES AGILITY AND FOOT SPEED
- IMPROVES SHOCK ABSORPTION FOR IMPACT TRAINING

CONTENT & CARE

- 1MM THIN
- HAND OR MACHINE WASH COLD
- AIR DRY



ALIGNED

LEGGINGS 2.0

for WOMEN

AVAILABLE IN: NAVY BLUE, BLACK, IRON GREY

Our leggings are the perfect marriage of fashion and function. Our internal technology shapes and fires your muscles while energizing and supporting your hips and legs. Perfect for any activity or daily wear.

FEATURES

- DESIGNED WITH OUR POWERMESH™ PANELS
- MOISTURE WICK MATERIAL
- HIGH-RISE WAISTBAND FOR CONTROL
- FLEXIBLE SEAMS FOR ADDED COMFORT

BENEFITS

- STIMULATES GLUTES AND HAMSTRINGS
- INCREASES LOWER BODY AWARENESS
- LIFTS AND SHAPES GLUTES
- EMPLOYS RESISTANCE TRAINING

CONTENT & CARE

- HAND WASH COLD
- AIR DRY
- NO IRON

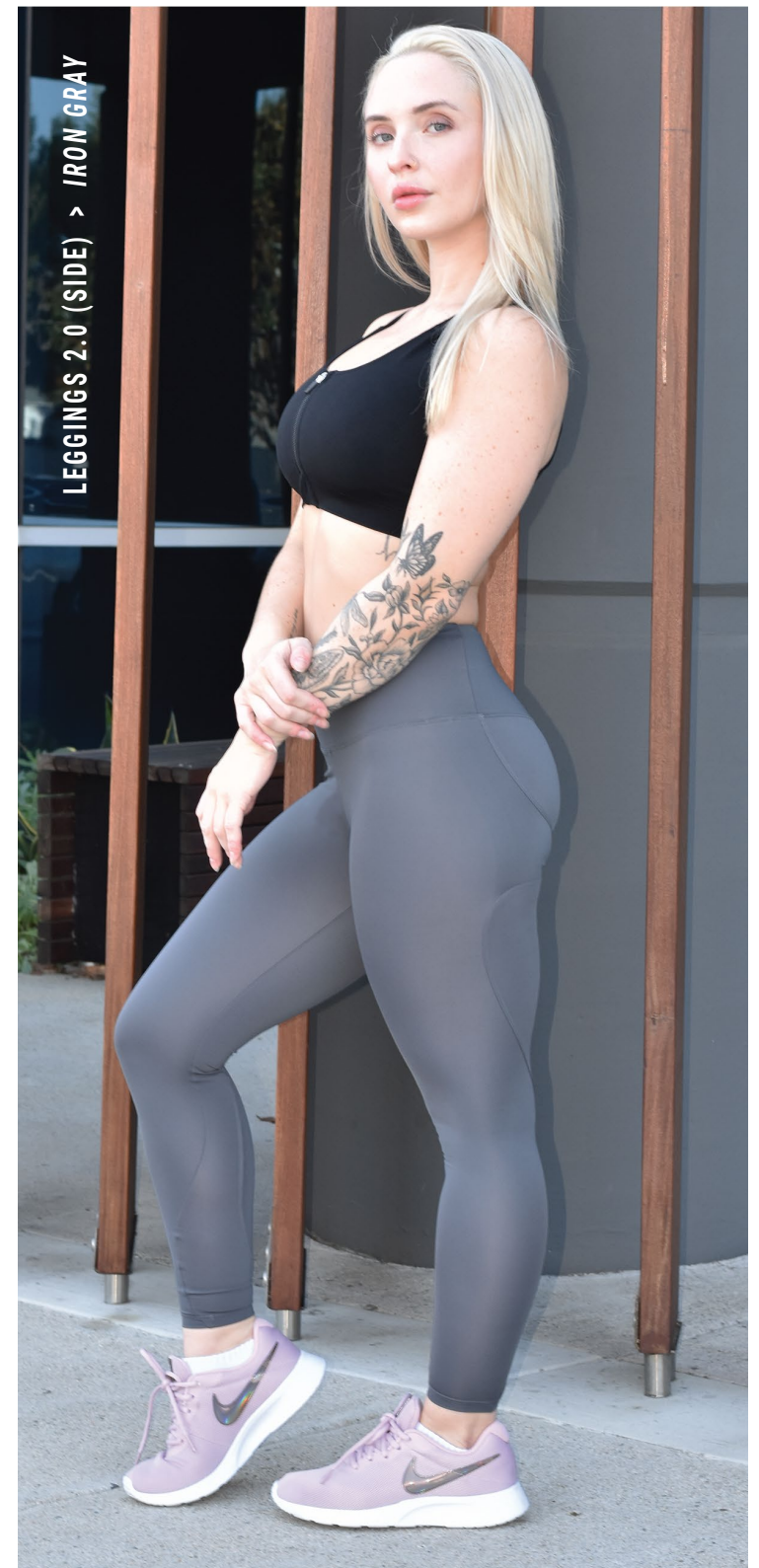




LEGGINGS 2.0 (BACK) > NAVY BLUE



LEGGINGS 2.0 (FRONT) > BLACK



LEGGINGS 2.0 (SIDE) > IRON GRAY

YOU WILL EXPERIENCE:

MORE ENERGY	INCREASED MUSCLE ACTIVITY
THERMOGENESIS	CORRECT BODY ALIGNMENT
MUSCLE ACTIVATING	IMPROVED PERFORMANCE
PAIN RELIEF	FASTER RECOVERY RATE
	INCREASED MOBILITY

FEATURED BY

Forbes

GOOD
HOUSEKEEPING

Sports
Illustrated



THE
WALL STREET
JOURNAL.

ALIGNMED

1936 EAST DEERE AVENUE

SUITE 115

SANTA ANA, CALIFORNIA 92705

TEL: 866.987.5433

FAX: 888.822.2313

ALIGNMED.COM

